

FOR LEASE

Executive Office Space in Prime Location



1408 S Andrews Ave. Fort Lauderdale FL 33316



PROPERTY HIGHLIGHTS:

- Bldg. Size: 3,200 SF
- Land Size: 0.16 AC
- Current Use: Law Office
- All Custom Built
- Two Floors
- Concrete Built Structure
- Next to Broward Gen. Hospital
- Impact Windows
- Parking: 8 + street parking
- Custom Built Executive Offices
- Close to I-95
- Prime Location
- Retail Frontage
- Zoning: SRAC-SA
- Permitted Use: Law Office, Retail, Medical, Bar, Restaurant, etc.

954.281.8100

Frank Tolentino

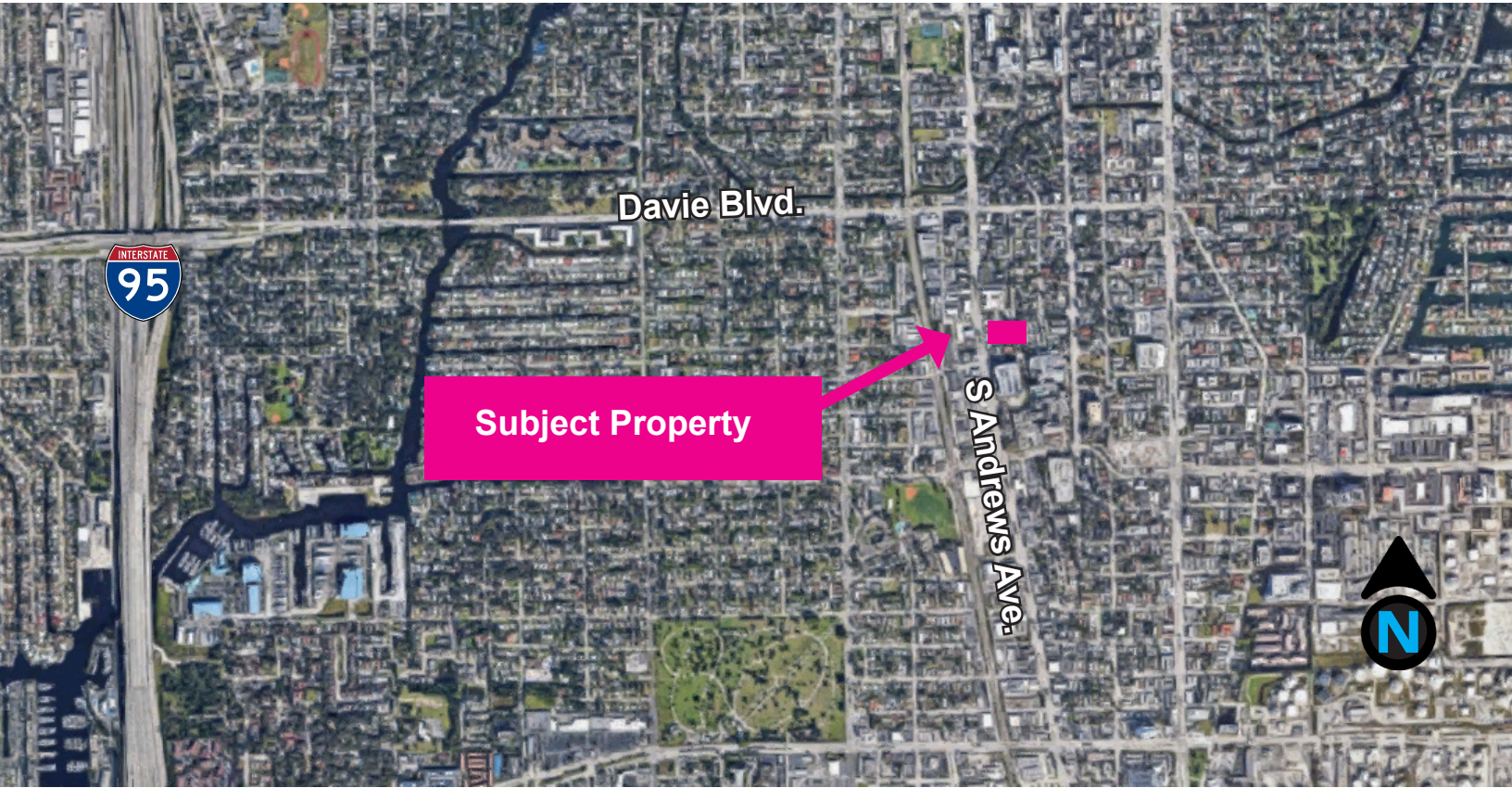
Disclaimer: The above information was obtained from sources deemed to be reliable. Details pertaining to the property described above may change without notice and are subject to errors and/or omissions.

support@entisso.com

954.281.8100

www.entisso.com

PRIME LOCATION. GREAT VISIBILITY!



954.281.8100

Frank Tolentino

1500 E Atlantic Blvd. Suite B, Pompano Beach FL 33060



LOKATION®
REAL ESTATE

A Licensed Brokerage Company

support@entisso.com

954.281.8100

www.entisso.com